

26th World Gas Conference

1 – 5 June 2015, Paris, France



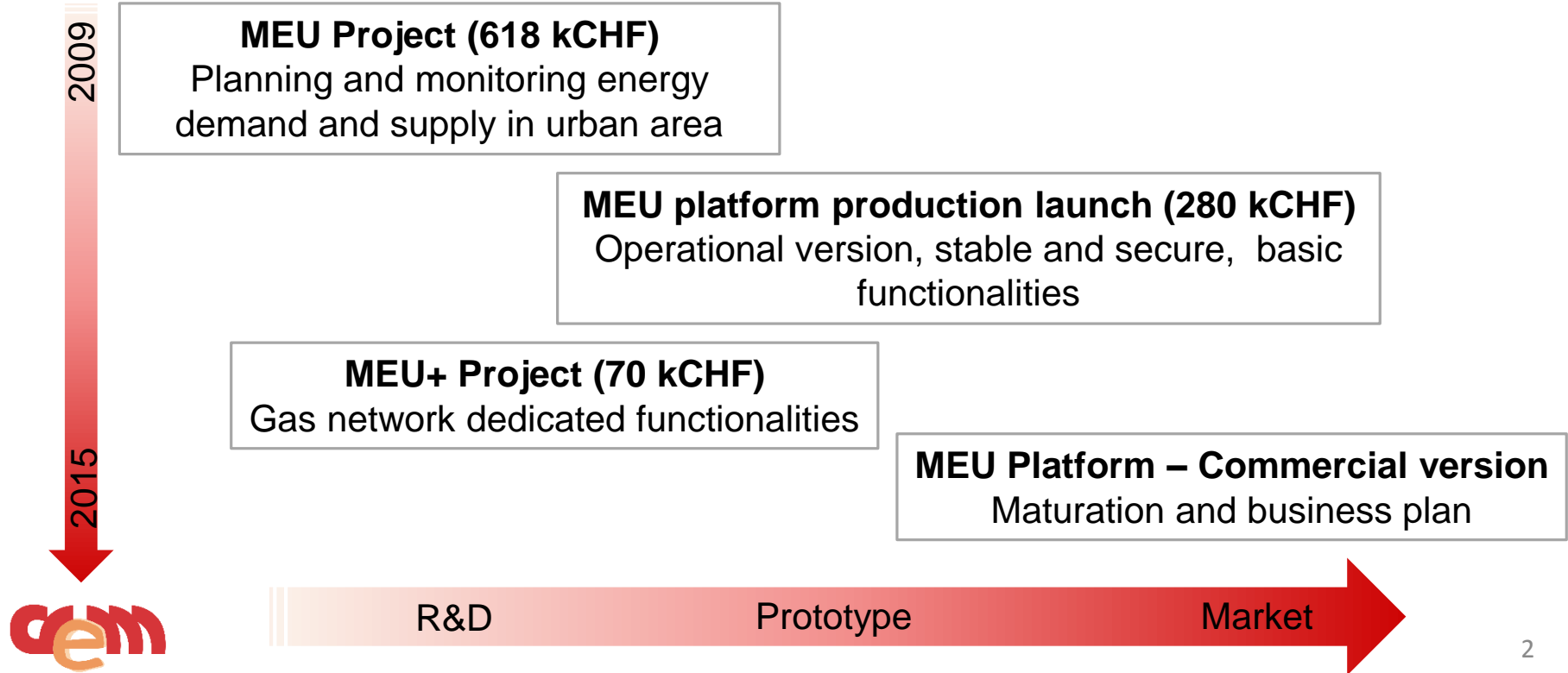
Towards pre-dimensioning of natural gas networks on a web-platform

Gaëtan CHERIX
Centre de Recherches Energétiques et Municipales



The MEU platform

- A tool dedicated to urban energy monitoring and planning



The MEU platform

- Partnerships

Lead

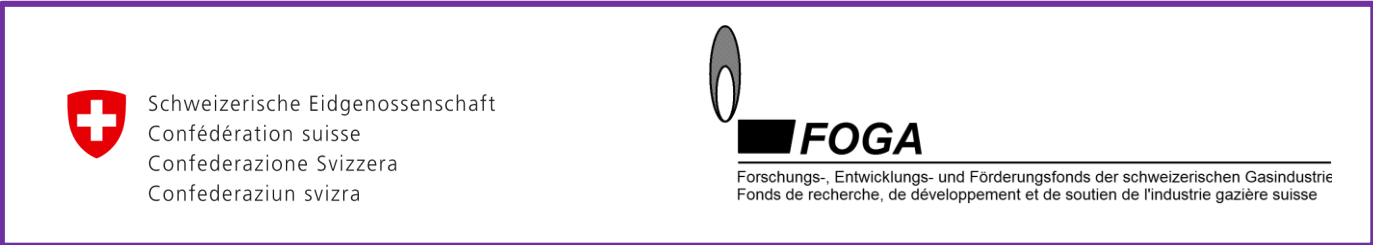
Academics

Cities

Utilities

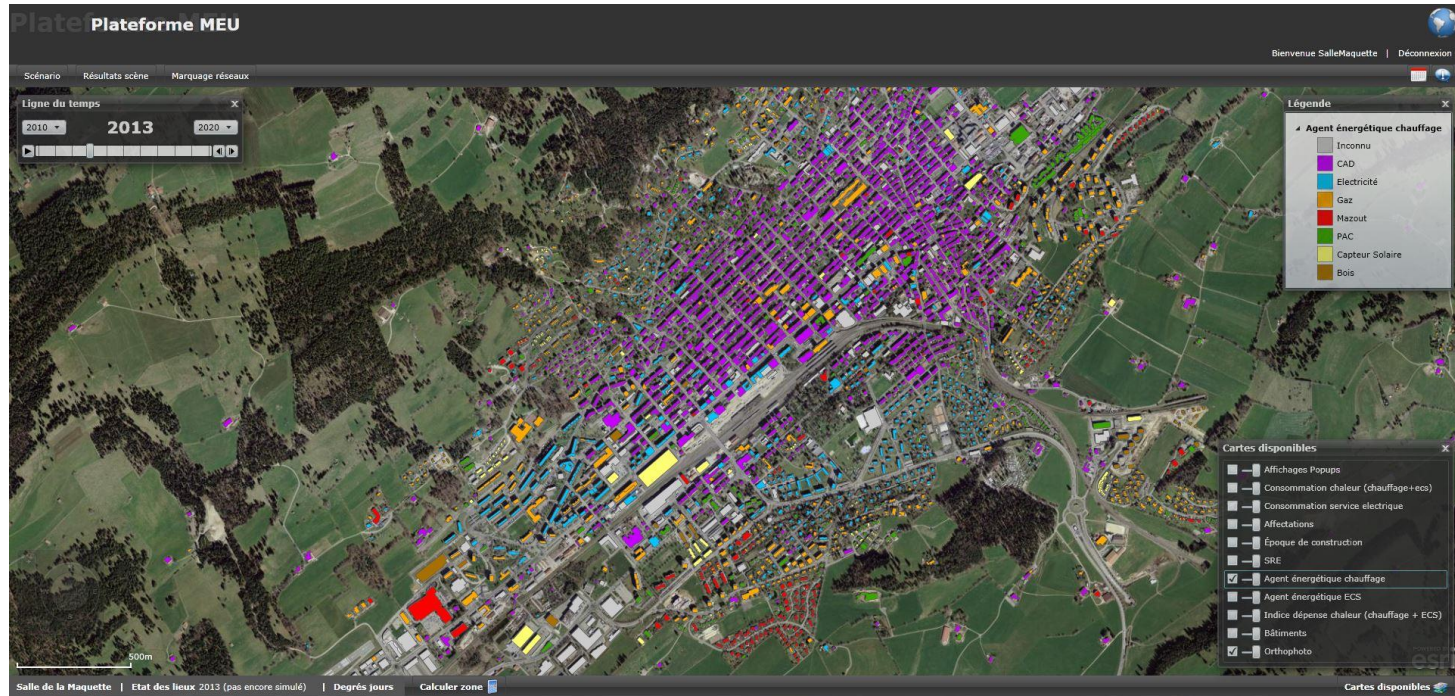
Software dev.

Financers



The MEU platform – functionalities and characteristics

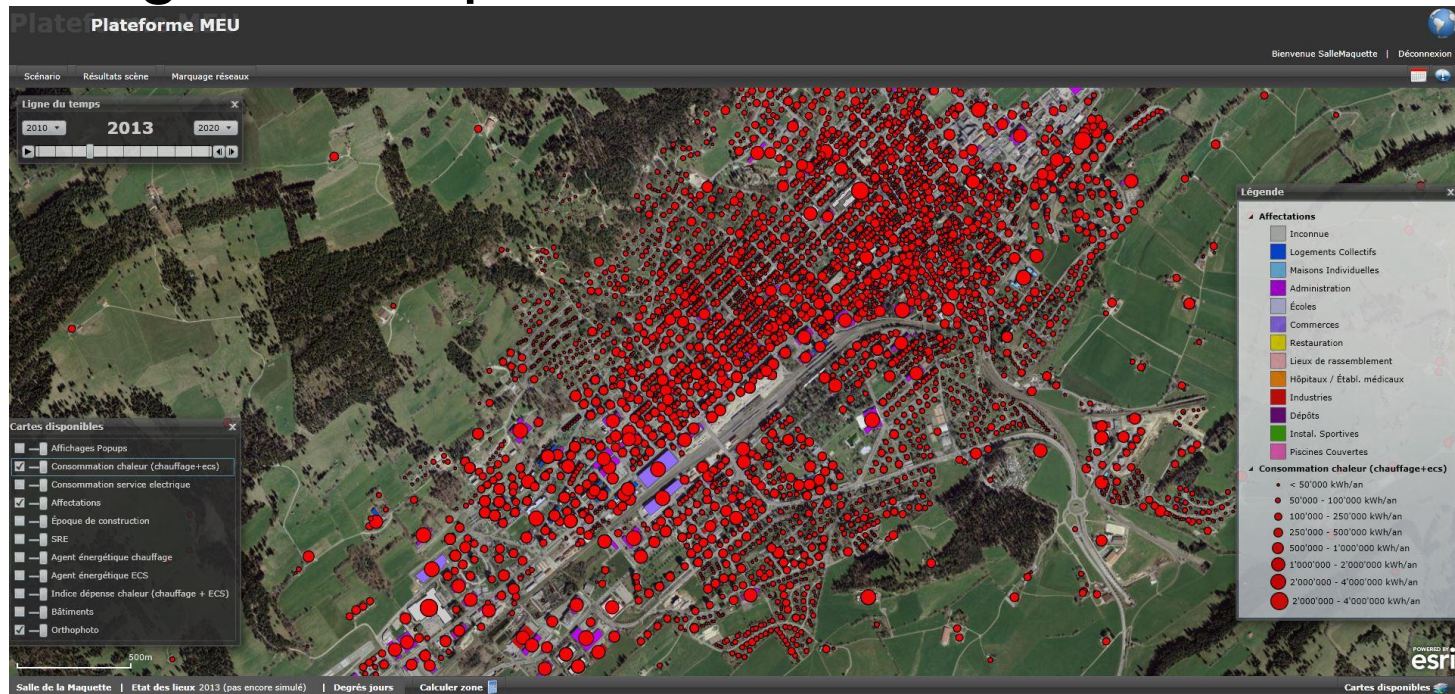
- Heating technologies



Fake data

The MEU platform – functionalities and characteristics

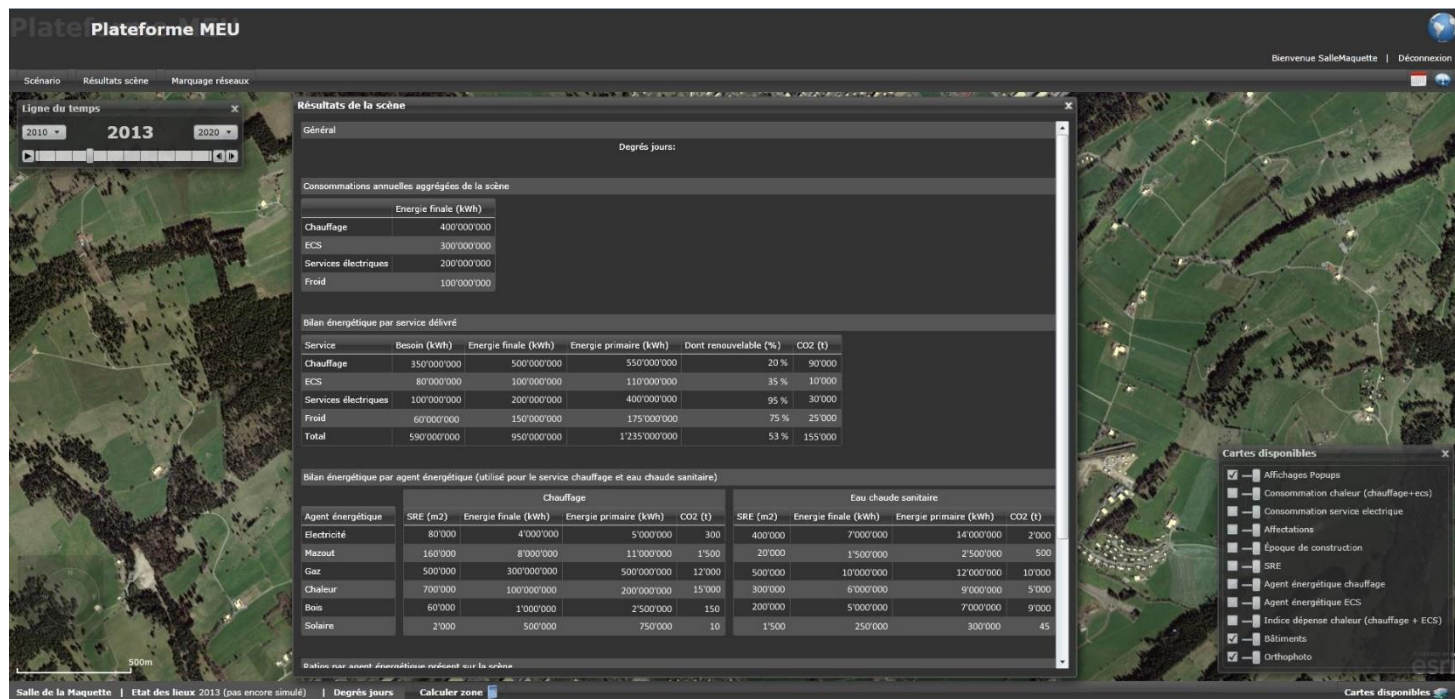
- Heating consumption



Fake data

The MEU platform – functionalities and characteristics

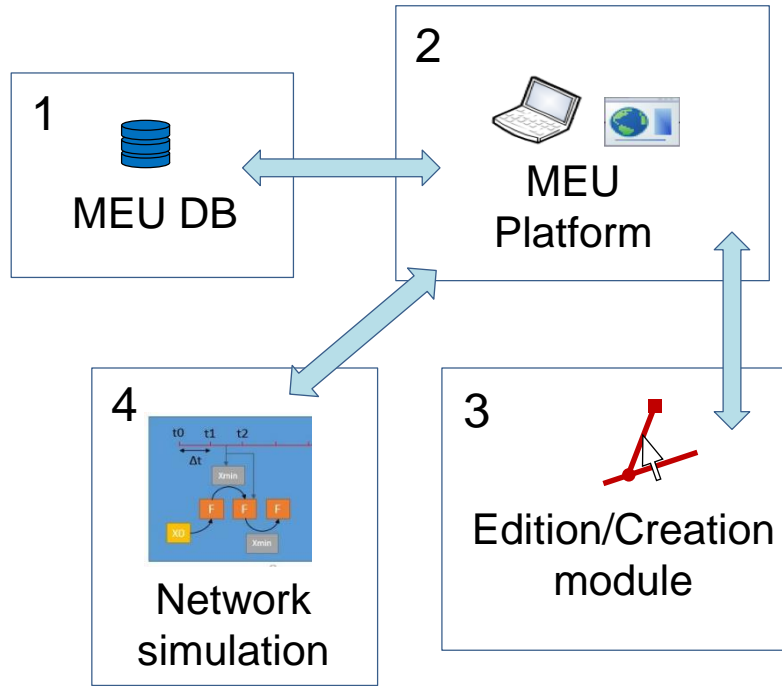
- Area energy balance



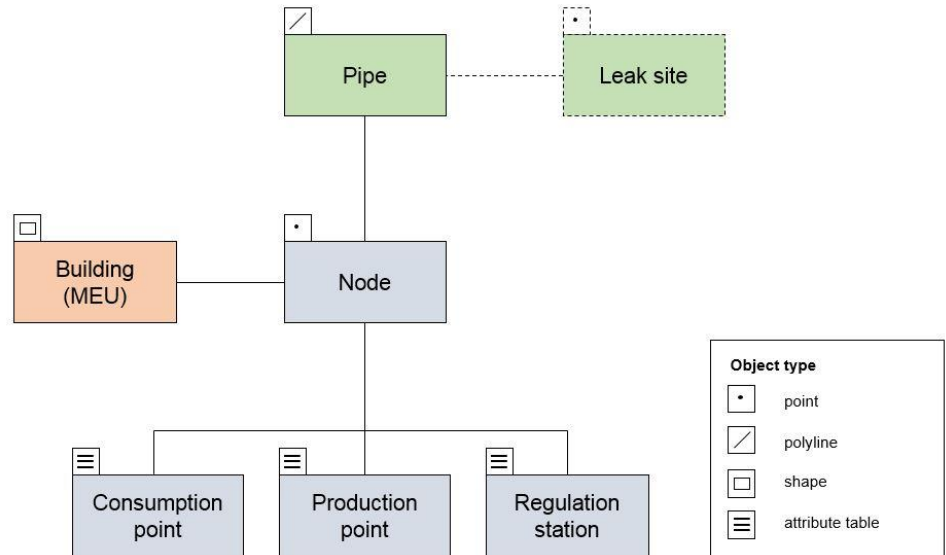
The MEU + project

- A new “Natural Gas Networks” module built for energy utilities
 - Data valorisation for gas distribution industry
 - Gas dedicated energetic and geo-referenced data gathering
 - Gas networks
 - GIS representation
 - Scenarios creation/edition
 - Behaviour simulation
- ⇒ Bottom-up approach

The MEU platform – Gas network integration



Dedicated data model creation



The MEU platform – Gas network integration

- Platform improvements



Conclusion

- The MEU platform display global and detailed picture of an area, with consumptions and energy balances
- High added value data exchange between different energy actors
- Transversality in territorial energy planning and management
- Improving :
 - comprehension of global urban energy metabolism
 - design methods of territorial energy systems